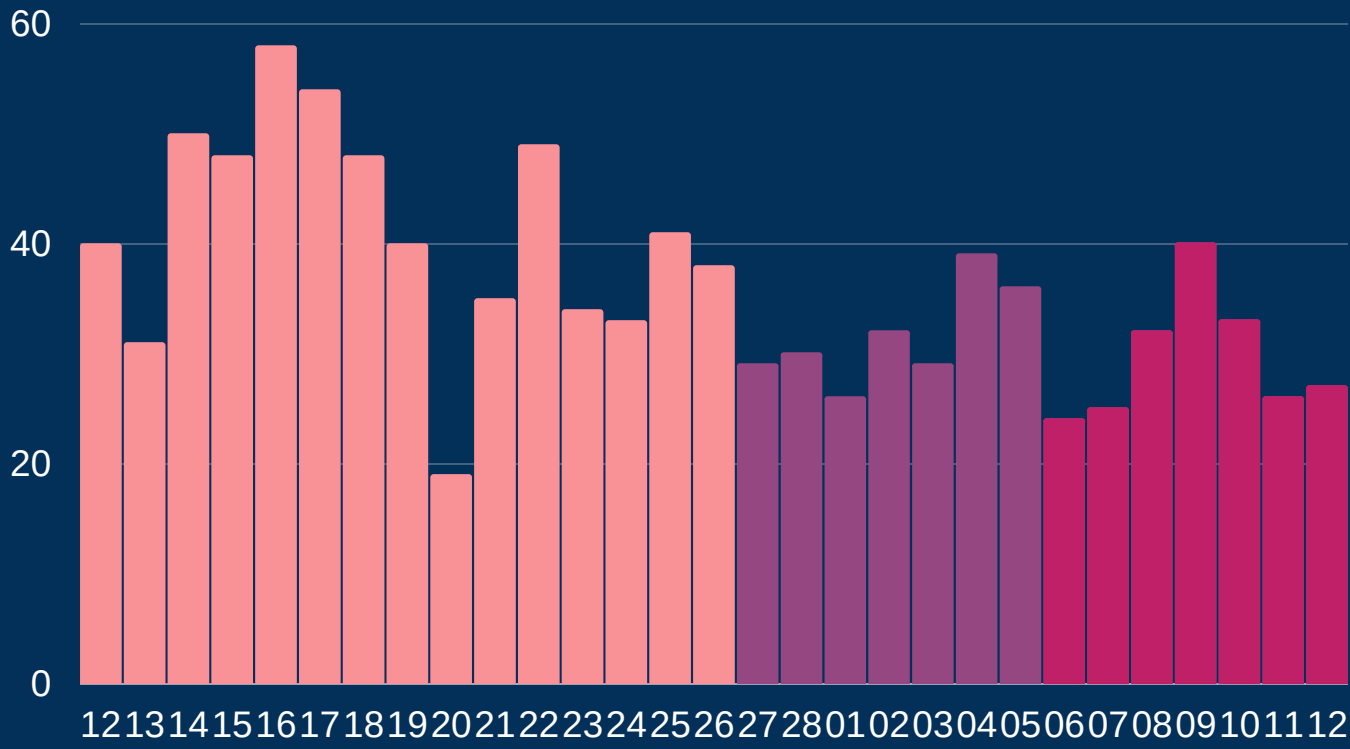




# Newcastle COVID cases

Total daily cases



February - March

Figures based on provisional data

Monday 15 March 2021

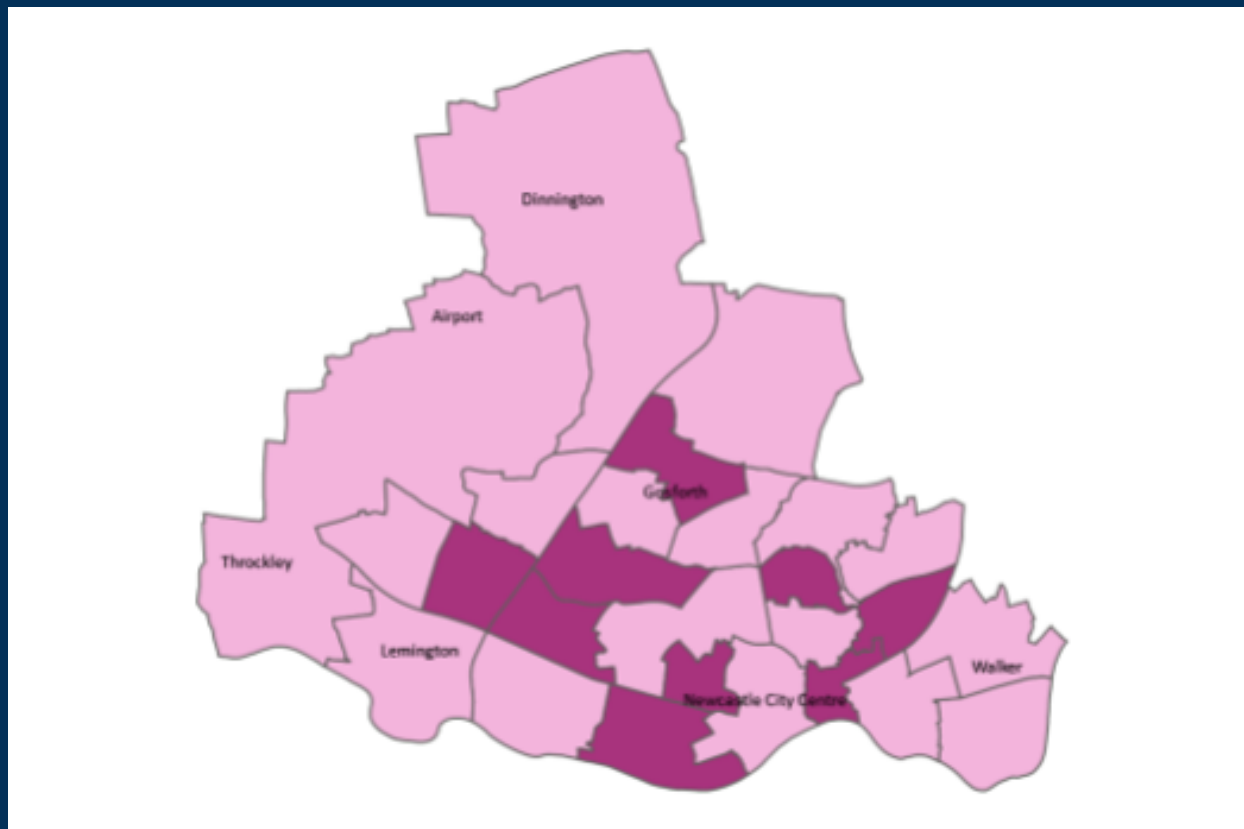
↓	New cases in last 7 days	207
↓	New cases in previous 7 days	221

Case rate per 100,000 population

↓	Newcastle	68
→	LA7	68
→	North East	76
→	England	57

\*arrows show whether figure is up, down or the same as the previous 7 days. Figures are accurate at time of publishing and based on national Public Health England data.

## Case rate by ward



Map indicator

Adjusted 14-day rate per 100k population to 12 March 2021

- 0-50
- 50.01-100



### Vaccinations

North East and Yorks total First dose 3.17m  
13 March



### Hospital

Data (UK) 8,029  
Total number COVID-19 patients in hospital in UK as of 11 March



### Deaths

Newcastle residents

7 days to 26 Feb	
Total	59
Cause: COVID-19	9
7 days to 19 Feb	
Total	56
Cause: COVID-19	7