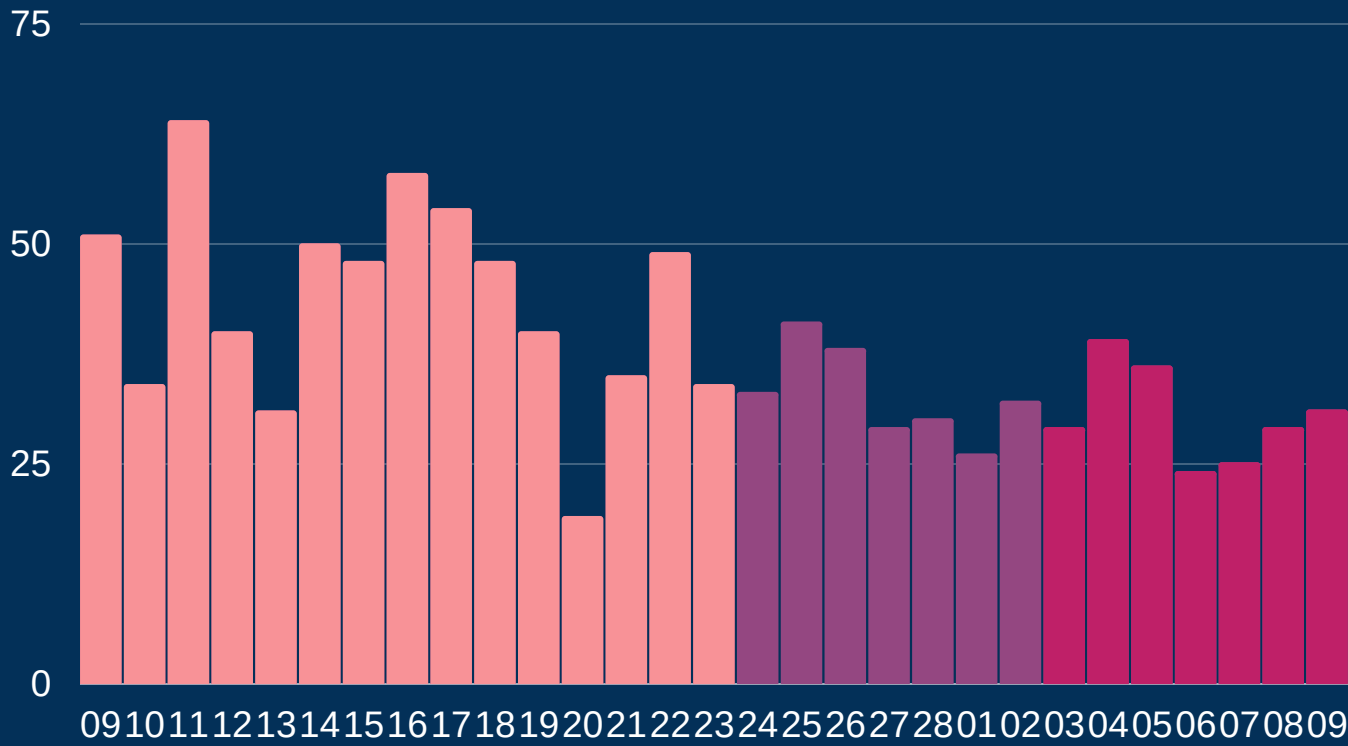




Newcastle COVID cases

Total daily cases



February - March

Figures based on provisional data

Friday 12 March 2021

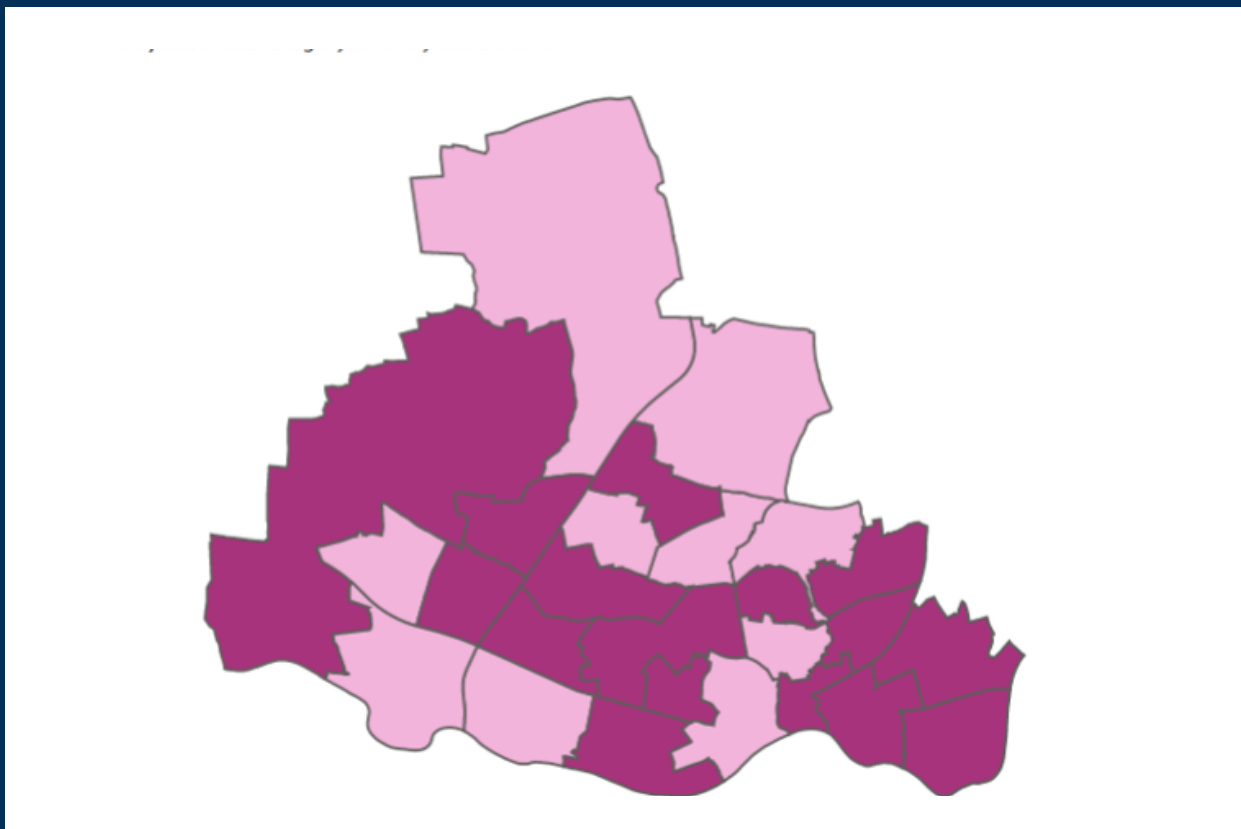
➔	New cases in last 7 days	213
➔	New cases in previous 7 days	229

Case rate per 100,000 population

➔	Newcastle	70
➔	LA7	66
➔	North East	75
➔	England	57

*arrows show whether figure is up, down or the same as the previous 7 days. Figures are accurate at time of publishing and based on national Public Health England data.

Case rate by ward



Map indicator

Adjusted 14-day rate per 100k population to 09 March 2021

- 0-50
- 50-100



Vaccinations

North East and Yorks total First dose 3m
10 March



Hospital

Data (UK) **8,977**
Total number COVID-19 patients in hospital in UK as of 09 March



Deaths

Newcastle residents

7 days to 26 Feb

Total 59

Cause: COVID-19 9

7 days to 19 Feb

Total 56

Cause: COVID-19 7