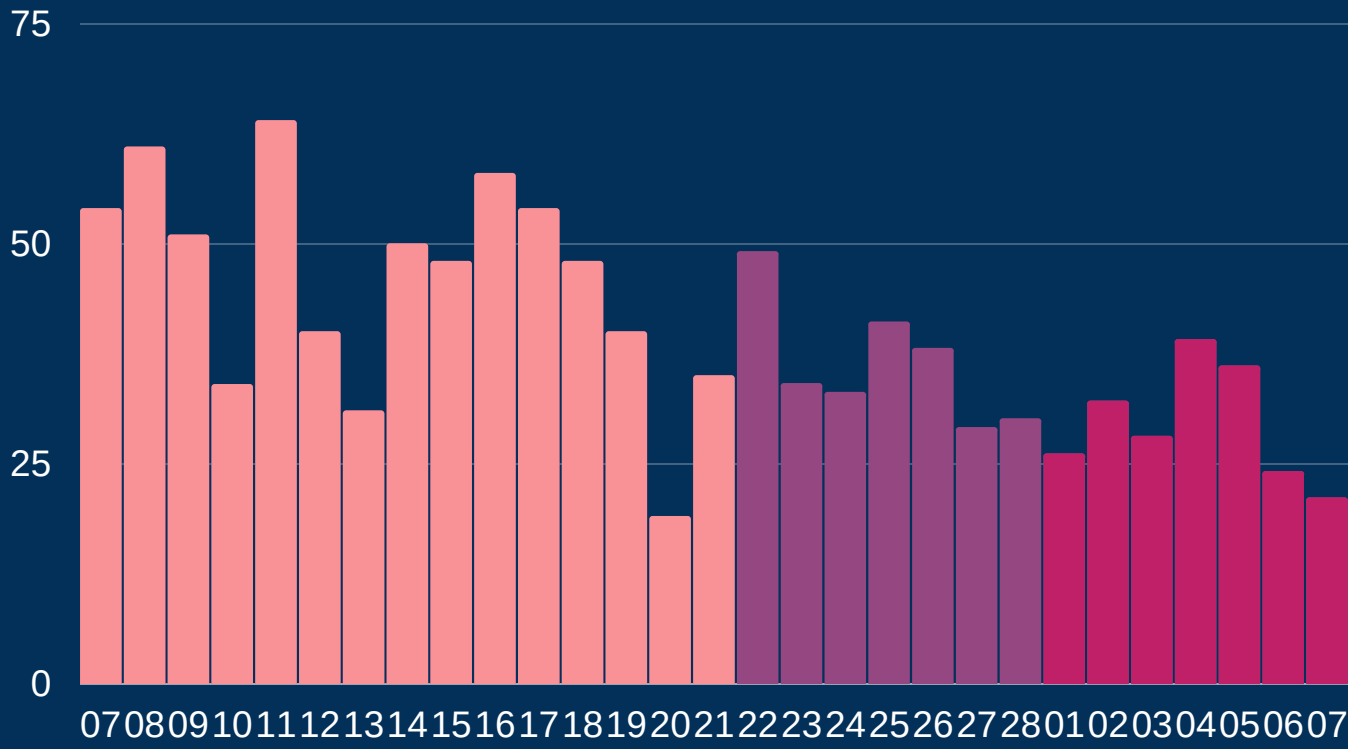




Newcastle COVID cases

Total daily cases



February - March

Figures based on provisional data

Tuesday 9 March 2021

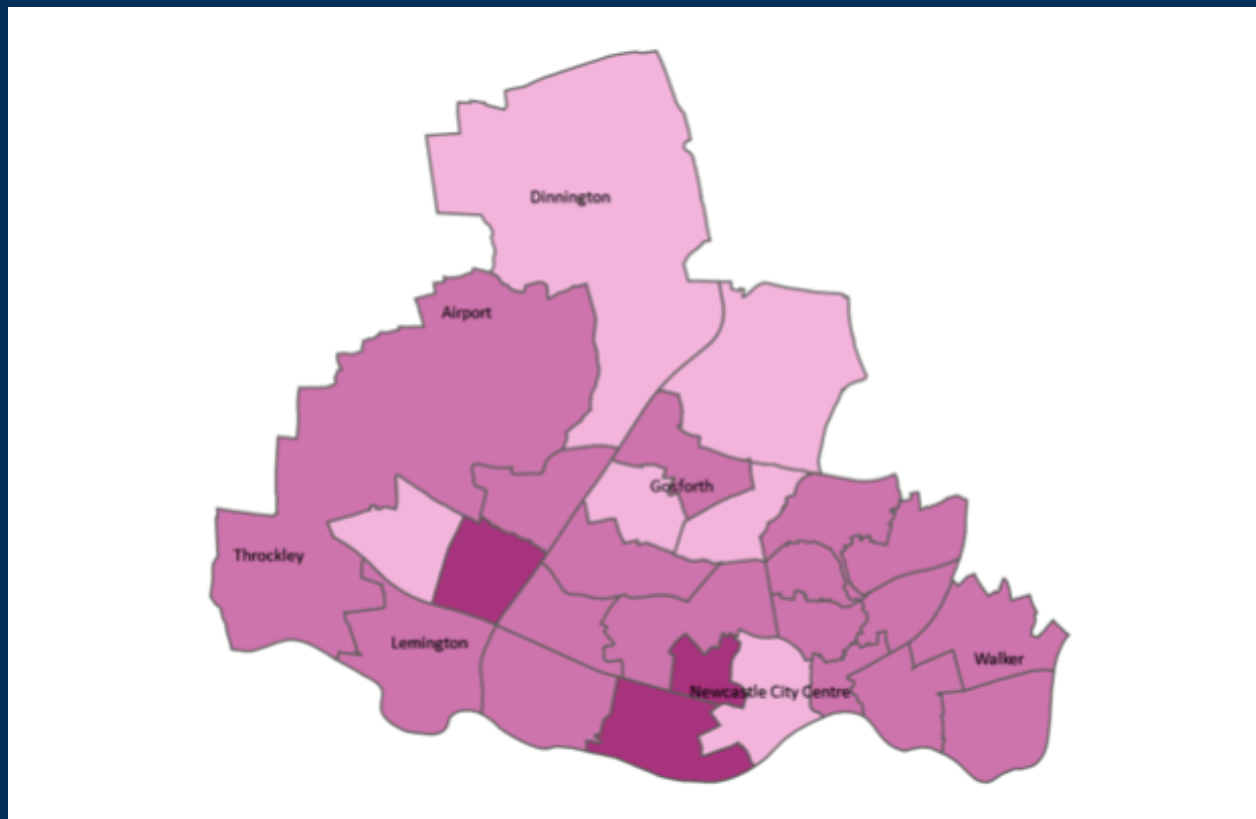
↓	New cases in last 7 days	206
↓	New cases in previous 7 days	253

Case rate per 100,000 population

↓	Newcastle	68
↓	LA7	69
↓	North East	77
↓	England	58

*arrows show whether figure is up, down or the same as the previous 7 days. Figures are accurate at time of publishing and based on national Public Health England data.

Case rate by ward



Map indicator

Adjusted 14-day rate per 100k population to 07 March 2021

- 0-50
- 50-100
- 100-150



Vaccinations

North East and Yorks total First dose 2.96m
08 March



Hospital

Data (UK) 9,418
Total number COVID-19 patients in hospital in UK as of 07 March



Deaths

Newcastle residents

7 days to 26 Feb	
Total	59
Cause: COVID-19	9
7 days to 19 Feb	
Total	56
Cause: COVID-19	7