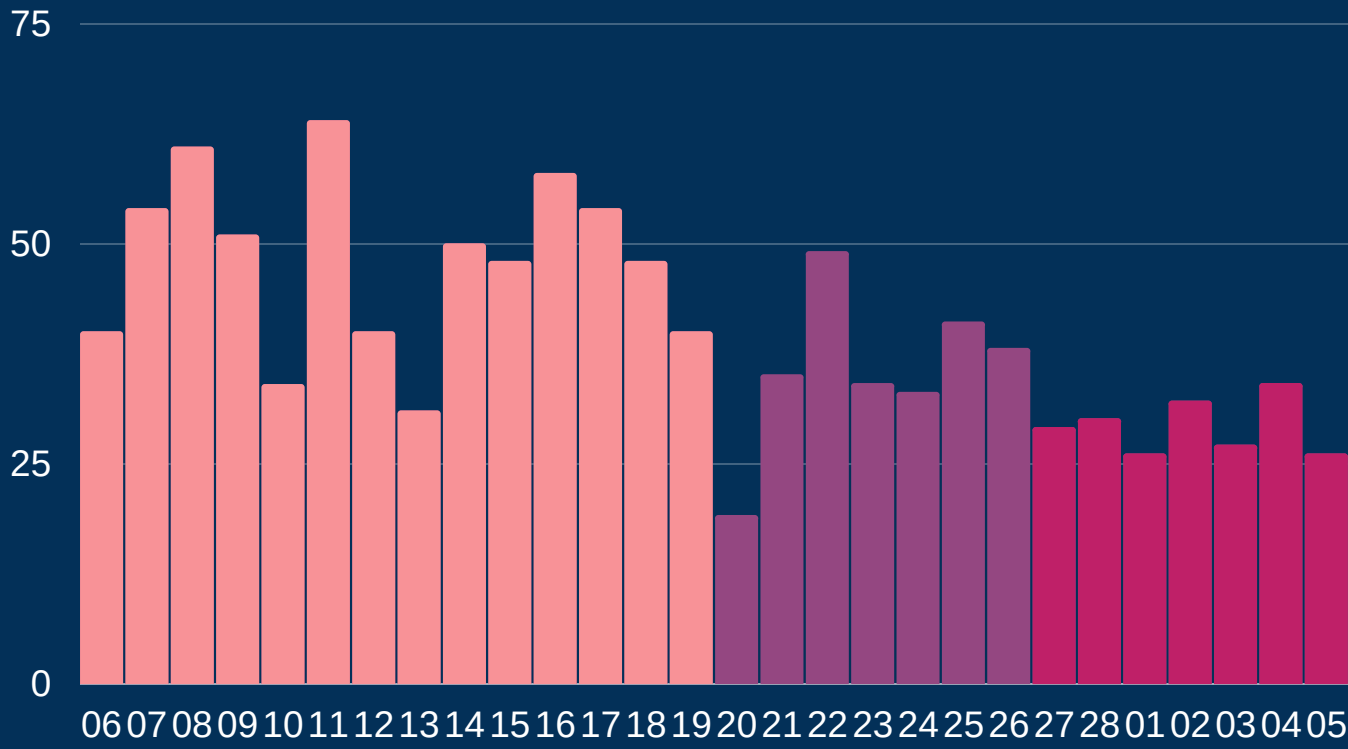




# Newcastle COVID cases

Total daily cases



February - March

Figures based on provisional data

Monday 8 March 2021

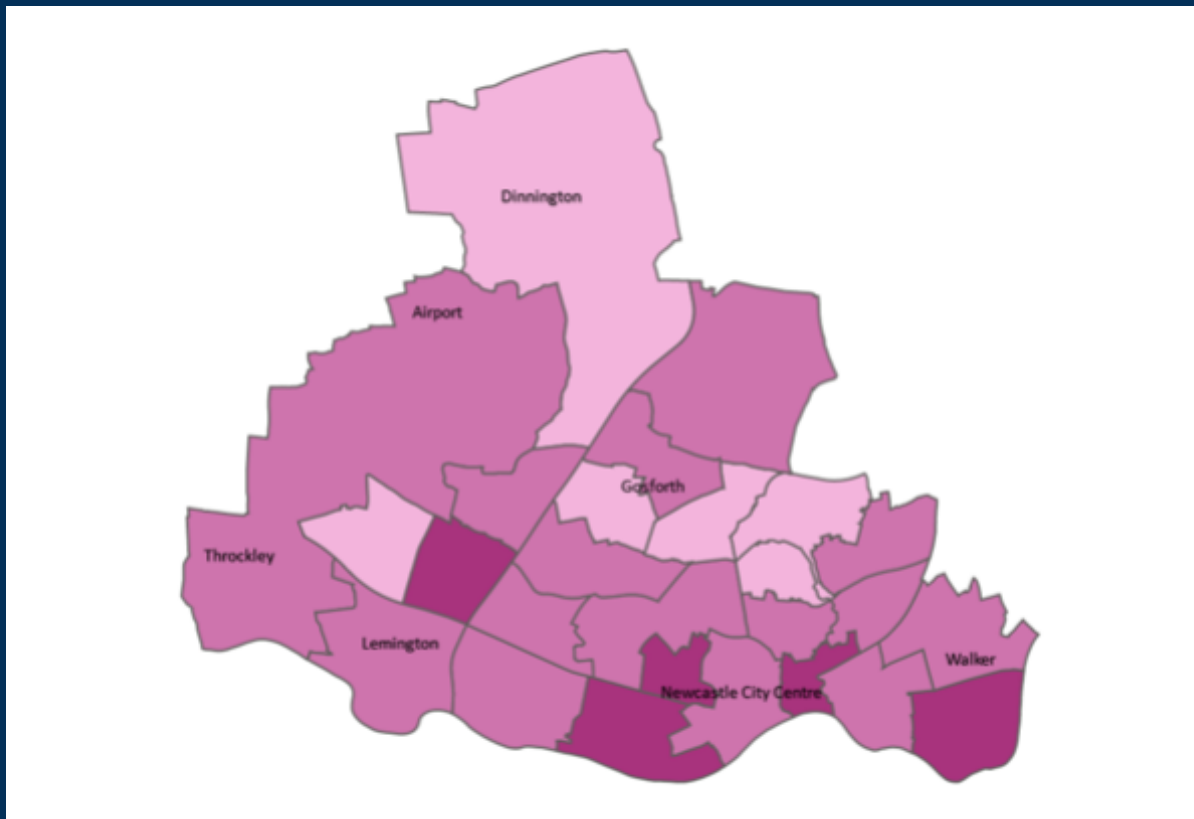
↓	New cases in last 7 days	203
↓	New cases in previous 7 days	250

Case rate per 100,000 population

↓	Newcastle	67
↓	LA7	71
↓	North East	77
↓	England	59

\*arrows show whether figure is up, down or the same as the previous 7 days. Figures are accurate at time of publishing and based on national Public Health England data.

## Case rate by ward



Map indicator

Adjusted 14-day rate per 100k population to 05 March 2021

- 0-50
- 50-100
- 100-150

**Vaccinations**  
North East and Yorks total  
06 March

First dose: 2.91m

**Hospital**  
Data (UK)

10,898  
Total number COVID-19 patients in hospital in UK as of 04 March

**Deaths**  
Newcastle residents

<b>7 days to 19 Feb</b>	
Total	56
Cause: COVID-19	7
<b>7 days to 12 Feb</b>	
Total	65
Cause: COVID-19	14