

EU08/12

Unemployment in Tyne & Wear: November 2008

Published: December 2008

In Tyne & Wear in November 2008 the main features were:

- 27,751 people, 5.8% of the labour force, claimed unemployment benefits (Table 2).
- Claimant unemployment count statistics for current (2004) wards are provided in Appendix 1.
- In the month to November, **the unadjusted claimant count rose in Tyne & Wear (2,092, 7.5%), regionally by +7.8%, and in the UK by +8.8%** (Table 2). The claimant count rose in all five Tyne & Wear Districts. The fastest rise was in Sunderland (+731, 11.0%) and the slowest in Newcastle (+314, 4.9%).
- **In the UK, the claimant count has risen for the tenth consecutive month since January, up 75,700 in November (up 7.6%) (the biggest monthly rise for about 17 years).** The UK claimant count rose by 31,800 in September and 36,500 in October. Compared to a year ago, the UK seasonally adjusted claimant count is 257,500 higher (up 31.6%). The UK claimant count also rose above 1 million. The UK seasonally adjusted claimant count rate is 3.3% (Table 1).
- **The claimant count, compared to a year ago, is higher locally, regionally and in the UK generally by over 30%.** Compared to a year ago, the claimant count is +32.4% (+6,788) higher in Tyne & Wear, +34.9% higher in the North East and +34.4% higher in the UK. At Tyne & Wear district level, the claimant count is over 25% higher in all five districts compared to a year ago. The fastest rise was in Gateshead (+1,259, +40.9) and the slowest in Newcastle (+1,385, +25.8%). (Table 2).
- **The North East seasonally adjusted claimant count rose 3,900 to 63,000 in November, up 15,500 over the year** (Table 1). The North East has the highest regional rate in the UK (5.1%). The South East and South West had the lowest regional rate (2.2%). The claimant count rate in the month to November increased in London by +0.1 percentage points (pp); in the East, South East and South West by +0.2 pp; and in all other Government Office Regions, including the North East +0.3pp. (All seasonally adjusted).

Note: seasonally adjusted claimant count data in this broadsheet are provisional and are revised by ONS the following month.

Labour Force Survey (LFS) Estimates

Labour Force Survey (LFS) estimates, particularly for the North East and Tyne & Wear, are subject to sampling variability*. The following therefore gives the *probable* direction of change. Over the year to October 2008, in the North East the LFS indicates that the trend in the employment rate is down, -1.6 pp on the year at 70.3%. The North East unemployment rate in the quarter to October 2008 was 8.2%, up 1.1 pp on a year earlier [This is not significantly different].

In the UK the LFS shows a fall in the number of people in employment (down 115,000 over the quarter to October) and in the employment rate (74.2%, down 0.4 pp). The number of workforce jobs in the UK, however, was down in September 2008 by 71,000 on a year earlier. (The sector with the largest quarterly fall was finance and business services, down 72,000). The UK unemployment rate in the 3 months to October 2008 was 6.0%, up 0.7 percentage points from a year earlier. This is significantly different from a year ago.

(*95% of estimates of UK rates will be within +/-0.2 percentage points of the actual unemployment rate and in the North East about +/-1.3 percentage points of the actual rate).

12-month averages from the Annual Population Survey (APS) give more robust unemployment rates. **In Tyne & Wear for the 12 months to December 2007, estimated ILO unemployment was 32,800 or 6.4% (unadjusted)** (Table 5).

Appendix 2 on Age and Duration shows over 40% of unemployed people are aged up to 24 years.

CLAIMANT COUNT UNEMPLOYMENT

The claimant count reports numbers qualifying for benefits as a result of unemployment and is subject to the associated administrative system.

Table 1: Change in Total Claimant Count: Seasonally Adjusted*: November 2008

	(Workforce rates) [#]		Change since previous:			
	Total	Rate %	Month	%	Year	%
North East Region	63,000	5.1 (w)	3,900	6.6	15,500	32.6
Great Britain	1,037,800	3.3 (w)	72,600	7.5	246,900	31.2
United Kingdom	1,071,900	3.3 (w)	75,700	7.6	257,500	31.6

Source: Office for National Statistics

Notes: * The seasonally adjusted series takes account of previous changes which have affected the unemployment count so that the whole series over time is consistent with current figures. Seasonally adjusted figures are not available below regional level. Claimants aged under 18 are excluded. Figures in this table are provisional.

The national and regional claimant count rates in Table 1 are the number of unemployed as a percentage of the estimated total workforce (the sum of unemployed claimants, employees in employment, self-employed, HM Forces and participants on work-related government training programmes), at mid-2006.

In January 2003, the Office for National Statistics (ONS) withdrew workforce-based claimant count rates for sub-regional areas, however, they remain available for regions and countries. The workforce-based rates, below regions, were replaced with a new residence-based measure. The claimant count, as a 'proportion' of the resident population of working age (PWA is females 16-59, males 16-64), are given in Table 3 and are named 'claimant count proportions'. TWRI's residence-based rates (which use the economically active as the denominator) are given in Table 2 (overleaf).

Table 2: National, Regional and Local Claimant Count* and Change, Unadjusted: November 2008

	Male		Female		Total		Change since previous month:		Change since previous year:	
	Rate%		Rate%		Rate%		Number	%	Number	%
Gateshead	3,339	7.3 R	1,000	2.5 R	4,339	5.1 R	315	7.8	1,259	40.9
Newcastle	5,193	8.7 R	1,562	3.0 R	6,755	6.0 R	314	4.9	1,385	25.8
North Tyneside	3,367	7.0 R	1,043	2.5 R	4,410	4.9 R	335	8.2	1,216	38.1
South Tyneside	3,692	10.2 R	1,194	4.0 R	4,886	7.4 R	397	8.8	1,109	29.4
Sunderland	5,617	8.3 R	1,744	3.0 R	7,361	5.9 R	731	11.0	1,819	32.8
Tyne & Wear	21,208	8.2 R	6,543	3.0 R	27,751	5.8 R	2,092	7.5	6,788	32.4
North East	47,291	7.2 W	14,524	2.5 W	61,815	5.0 W	4,474	7.8	15,986	34.9
Great Britain	756,485	4.5 W	265,996	1.8 W	1,022,481	3.2 W	82,581	8.8	259,135	33.9
United Kingdom	782,956	4.5 W	273,189	1.8 W	1,056,145	3.3 W	85,866	8.8	270,386	34.4

Source: Office for National Statistics, Tyne & Wear Research and Information

Notes: * Count of claimants of Jobseekers' Allowance

R = Residence-based. District and county claimant count rates are the number of unemployed now as a percentage of the estimates labour force (the economically active population), at 2001 Census © Crown Copyright.

W = Workforce-based. National and claimant count rates are the number of unemployed as a percentage of the estimated total workforce (the sum of unemployed claimants, employees in employment, self-employed, HM Forces and participants on work-related government training programmes), at mid-2006.

Caution: District and Tyne & Wear numbers in Table 2 are calculated using current (2004) wards. These numbers may vary slightly from figures extracted direct from NOMISWEB, which are based on 1991 wards and are no longer in complete alignment with current Tyne & Wear boundaries.

Table 3: National, Regional and Local Claimant Count*, Unadjusted: November 2008**(Resident PWA-based proportions)**

	Male	Percentage of population #	Female	Percentage of population #	Total	Percentage of population #
Gateshead	3,339	5.6	1,000	1.8	4,339	3.7
Newcastle	5,193	6.0	1,562	1.9	6,755	4.0
North Tyneside	3,367	5.7	1,043	1.8	4,410	3.8
South Tyneside	3,692	7.9	1,194	2.7	4,886	5.4
Sunderland	5,617	6.2	1,744	2.0	7,361	4.2
Tyne & Wear	21,208	6.2	6,543	2.0	27,751	4.2
North East Region	47,291	5.7	14,524	1.9	61,815	3.9
Great Britain	756,485	3.9	265,996	1.5	1,022,481	2.8
United Kingdom	782,956	4.0	273,189	1.5	1,056,145	2.8

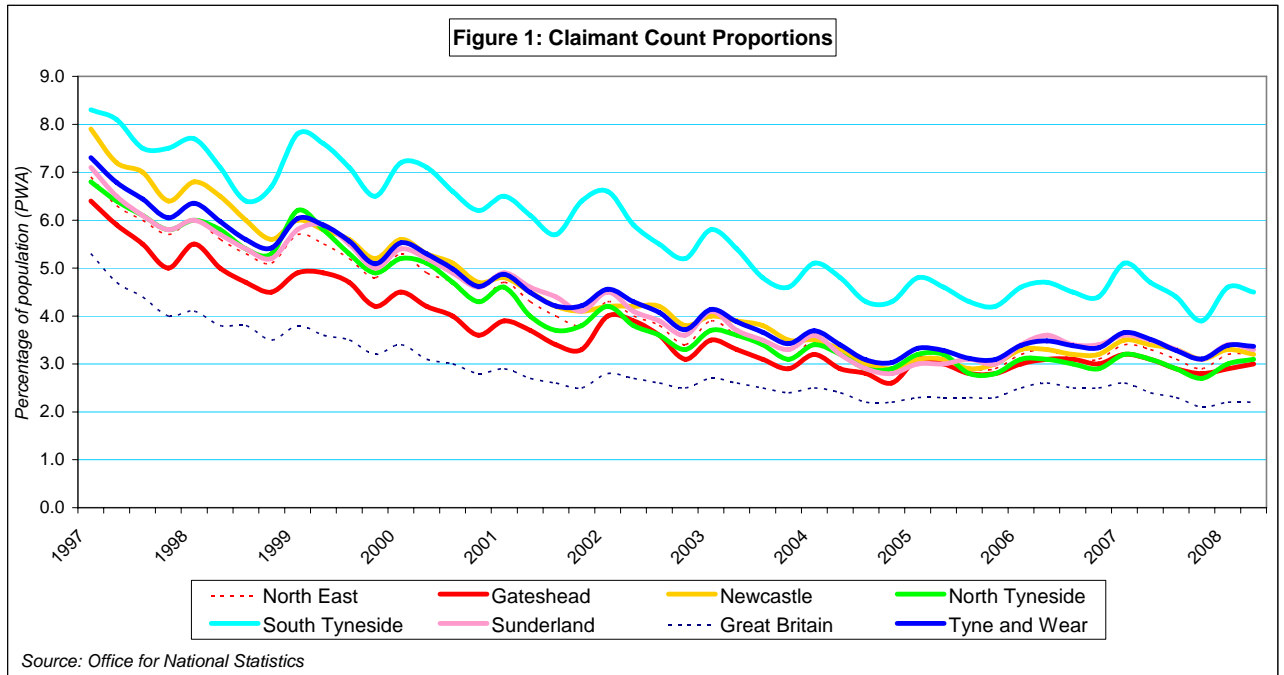
Source: Office for National Statistics, Tyne & Wear Research and Information

Notes: * Count of claimants of Jobseekers' Allowance

District and Tyne & Wear numbers in Table 3 are calculated using current (2004) wards. These numbers may vary slightly from figures extracted direct from NOMISWEB, which are based on 1991 wards.

Claimant count figures given in Table 3 are expressed as a proportion of the resident population of working age (females 16-59, males 16-64). In order to ensure consistency with District and Tyne & Wear boundaries, the population of working age (PWA) figures are derived from the mid-2001 population estimates (sum of CAS wards population of working age figures).

The percentage figures in Table 3 are referred to as 'proportions' to distinguish them from the workforce-based rates, which are available at region/country level. On average, the 'proportions' are around a fifth smaller than the workforce rates, due to the wider denominators.



Notes: Claimant count proportions (residence-based proportions of Population of Working Age) are given for January, April, July and October.

Caution: Not seasonally adjusted, so shows seasonal rises normally in January.

Table 4: National, Regional and Local Benefit Claimants

	Incapacity/Severe Disablement Allowance* May 2008						Benefit Claimants - working age client group**May 2008					
	Male	% of PWA #	Female	% of PWA #	Total	% of PWA #	Male	% of PWA #	Female	% of PWA #	Total	% of PWA #
Gateshead	4,920	8.2	2,740	4.9	7,660	6.6	11,860	19.9	10,590	18.9	22,450	19.4
Newcastle	5,820	6.7	3,180	3.9	9,000	5.4	16,690	19.3	14,960	18.4	31,650	18.9
North Tyneside	4,040	6.8	2,520	4.5	6,560	5.7	10,270	17.4	9,470	16.7	19,740	17.1
South Tyneside	3,970	8.5	2,040	4.7	6,000	6.6	10,280	22.0	9,350	21.4	19,630	21.7
Sunderland	8,230	9.1	4,800	5.6	13,020	7.4	18,790	20.7	16,740	19.5	35,530	20.1
Tyne & Wear	26,980	7.9	15,280	4.7	42,250	6.3	67,880	19.8	61,110	18.9	128,990	19.4
North East Region	128,720	15.5	75,950	10.0	204,670	12.9	152,890	18.4	140,940	18.5	293,830	18.5
Great Britain	1,908,350	9.9	1,256,470	7.1	3,164,810	8.6	2,530,560	13.2	2,593,540	14.7	5,124,110	13.9

Source: Department for Work and Pensions

Notes: The data are based on 100% of claims so are not subject to any sampling error. Figures are rounded to the nearest 10, and those below 5 are suppressed as statistically unreliable..

Data relate to a single point in time and provide a snapshot of claims at that point. Data are not seasonally adjusted.

* Count of those in receipt of Incapacity Benefit or Severe Disablement Allowance, aged 16-64, for all durations.

** Benefit claimants – working age client group includes benefit claimants aged 16-64 years, on Income Support (IS) only, Job Seekers Allowance (JSA) only, Incapacity Benefit (IB) only, IS and IB, DLA and IB, DLA, IS and IB, Disability Living Allowance (DLA) only, DLA, IS and SDA, DLA and IS, DLA and SDA, IS and SDA, Severe Disablement Allowance (SDA) only, DLA and JSA, other combinations. Data includes all durations and all family types.

Benefit claimant count figures given in Table 4 are expressed as a proportion of the resident population of working age (females 16-59, males 16-64). In order to ensure consistency with District and Tyne & Wear boundaries, the population of working age (PWA) figures are derived from the mid-2001 population estimates (sum of CAS wards population of working age figures).

INTERNATIONAL LABOUR ORGANISATION (ILO) MEASURE OF UNEMPLOYMENT

The ILO definition of unemployment, refers to people “without a job who were available to start work in the two weeks following their LFS interview and had looked for work in the four weeks prior to interview (or were waiting to take up a job they had already obtained)”. This has been the official, government, definition of unemployment since 1998.

Table 5: National, Regional and Local ILO Unemployment, Unadjusted: 12 months Apr 2007-Mar 2008

	Male	%	Confidence*	Female	%	Confidence*	Total	%	Confidence*
Gateshead	3,500	6.9	2.5	2,200	5.4	2.2	5,700	6.2	1.7
Newcastle	5,100	7.8	2.6	3,700	6.6	2.6	8,800	7.2	1.8
North Tyneside	3,800	7.4	2.7	2,500	5.7	2.4	6,400	6.6	1.8
South Tyneside	2,200	5.9	2.3	2,200	6.6	2.5	4,300	6.3	1.7
Sunderland	6,000	8.3	2.7	3,800	6.2	2.5	9,800	7.3	1.8
Tyne & Wear	20,600	7.4	1.1	14,400	6.1	1.1	35,000	6.8	0.8
North East Region	46,900	7.2	0.7	31,700	5.8	0.7	78,700	6.5	0.5
Great Britain	871,200	5.5	0.1	663,000	5.1	0.2	1,534,200	5.3	0.1

Source: Annual Population Survey, Office for National Statistics.

Notes: Unemployment data from the Annual Population Survey (APS), covering a year's data.

The unemployment rate is the number of unemployed people aged 16 to 59/64 expressed as a percentage of the economically active population aged 16 to 59/64.

*Data are presented with an indication of their reliability, in the form of approximate 95% confidence intervals. For example, an LFS estimate and confidence interval of 6.7% +/-0.7%, means the true rate would expect to lie between 6.0% and 7.4%. Only in exceptional circumstances would the true rate be outside the confidence interval. The narrower the confidence interval, the more reliable the estimate.

APS estimates are rounded to the nearest 100 by ONS. Formerly, ONS' LFS estimates were rounded to the nearest 1,000. The annual Labour Force Survey (LFS) is now incorporated into the Annual Population Survey (APS). Data are published quarterly with each publication covering a year's data. LFS - quarterly: four quarter averages are no longer updated.

Appendix 1: Claimant Count Statistics Current (2004) Wards

November 2008

Ward	FLOWS		CLAIMANT UNEMPLOYMENT					
	onto regr	off regr	Male	%*	Female	%*	Total	%*
Birtley	56	36	117	5.8	31	1.7	148	3.9
Blaydon	96	69	175	7.4	53	2.6	228	5.1
Bridges	84	83	240	14.5	75	6.2	315	11.0
Chopwell and Rowlands Gill	71	53	156	7.3	43	2.3	199	5.0
Chowdene	67	45	127	6.3	41	2.3	168	4.5
Crawcrook and Greenside	43	35	96	4.2	24	1.2	120	2.7
Deckham	107	83	212	10.3	67	3.8	279	7.3
Dunston and Teams	115	99	285	16.1	58	3.9	343	10.5
Dunston Hill and Whickham East	46	42	85	3.8	31	1.6	116	2.7
Felling	107	96	251	14.3	70	4.7	321	9.9
High Fell	99	71	213	11.4	64	3.8	277	7.9
Lamesley	73	54	124	6.5	39	2.4	163	4.6
Lobley Hill and Bensham	90	77	211	9.5	62	3.2	273	6.6
Low Fell	33	26	70	3.0	23	1.1	93	2.1
Pelaw and Heworth	82	56	141	7.3	55	3.3	196	5.4
Ryton, Crookhill and Stella	43	31	101	4.9	30	1.6	131	3.4
Saltwell	83	70	190	9.0	56	3.2	246	6.4
Wardley and Leam Lane	42	37	92	4.5	32	1.8	124	3.2
Whickham North	48	37	114	5.9	42	2.6	156	4.3
Whickham South and Sunnyside	41	31	65	2.7	30	1.4	95	2.1
Windy Nook and Whitehills	71	59	150	6.6	42	2.2	192	4.5
Winlaton and High Spen	59	43	124	6.0	32	1.8	156	4.1
GATESHEAD	1,556	1,233	3,339	7.3	1,000	2.5	4,339	5.1
Benwell and Scotswood	120	98	318	10.8	104	4.1	422	7.7
Blakelaw	116	83	281	11.6	79	3.7	360	7.9
Byker	175	176	431	18.1	136	7.0	567	13.1
Castle	39	37	98	3.5	36	1.4	134	2.5
Dene	43	37	71	2.8	27	1.2	98	2.0
Denton	85	57	200	8.4	57	2.7	257	5.7
East Gosforth	30	24	65	2.8	23	1.1	88	2.0
Elswick	159	155	473	19.5	143	8.8	616	15.2
Fawdon	97	82	225	10.3	66	3.4	291	7.0
Fenham	88	76	178	7.5	45	2.2	223	5.1
Kenton	97	86	257	11.4	69	3.5	326	7.7
Lemington	68	66	172	6.5	47	1.9	219	4.3
Newburn	70	53	168	7.7	48	2.5	216	5.2
North Heaton	46	37	81	3.4	41	1.9	122	2.7
North Jesmond	27	20	54	2.5	17	0.9	71	1.8
Ouseburn	96	77	201	10.7	58	3.7	259	7.5
Parklands	32	21	56	2.9	23	1.4	79	2.2
South Heaton	93	94	181	8.9	55	2.9	236	6.0
South Jesmond	41	34	89	4.4	31	1.7	120	3.1
Walker	190	152	459	21.0	120	6.9	579	14.8
Walkergate	95	82	229	9.8	61	3.1	290	6.7
Westerhope	52	42	75	3.1	25	1.1	100	2.2
Westgate	124	99	333	20.2	87	6.7	420	14.3
West Gosforth	30	22	56	2.2	18	0.8	74	1.6
Wingrove	88	86	229	10.0	76	4.1	305	7.4
Woolsington	100	76	213	9.1	70	3.4	283	6.4
NEWCASTLE	2,201	1,872	5,193	8.7	1,562	3.0	6,755	6.0

Source: Office for National Statistics, Tyne & Wear Research and Information

Notes: * Rates are the number of unemployed as a percentage of the estimated labour force (the economically active population), at 2001 Census © Crown Copyright

Ward	FLOWS		CLAIMANT UNEMPLOYMENT					
	onto	off	Male	%*	Female	%*	Total	%*
	regr	regr						
November 2008								
Battle Hill	92	56	201	6.7	77	2.9	278	4.9
Benton	71	43	127	5.6	35	1.7	162	3.7
Camperdown	81	60	165	6.0	55	2.2	220	4.2
Chirton	153	121	390	15.5	105	4.8	495	10.5
Collingwood	85	54	191	7.5	54	2.5	245	5.2
Cullercoats	41	26	84	3.9	24	1.3	108	2.7
Howdon	109	85	289	12.3	81	4.3	370	8.7
Killingworth	53	51	109	4.2	42	1.9	151	3.1
Longbenton	84	67	204	10.4	59	3.5	263	7.2
Monkseaton North	44	33	63	2.7	23	1.1	86	1.9
Monkseaton South	59	48	98	4.3	36	1.7	134	3.1
Northumberland	73	56	137	6.1	43	2.1	180	4.2
Preston	42	34	83	3.6	30	1.5	113	2.6
Riverside	146	124	389	16.0	105	5.3	494	11.2
St Mary's	23	22	38	1.8	17	0.9	55	1.4
Tynemouth	81	63	133	5.1	43	1.9	176	3.6
Valley	71	59	147	7.2	41	2.3	188	5.0
Wallsend	124	102	277	10.5	77	3.4	354	7.2
Weetslade	59	40	116	4.9	41	2.0	157	3.5
Whitley Bay	64	56	126	5.1	55	2.5	181	3.9
NORTH TYNESIDE	1,555	1,200	3,367	7.0	1,043	2.5	4,410	4.9
Beacon and Bents	135	95	366	16.3	115	6.8	481	12.2
Bede	85	74	231	13.0	62	4.3	293	9.1
Biddick and All Saints	123	85	296	16.5	121	7.7	417	12.4
Boldon Colliery	82	64	163	6.9	48	2.3	211	4.8
Cleadon and East Boldon	27	16	42	1.9	29	1.5	71	1.7
Cleadon Park	74	70	180	11.0	61	4.4	241	7.9
Fellgate and Hedworth	101	73	194	9.4	49	2.8	243	6.4
Harton	98	48	206	10.3	65	4.1	271	7.6
Hebburn North	111	76	234	11.3	71	4.0	305	7.9
Hebburn South	76	49	161	8.5	48	3.1	209	6.0
Horsley Hill	86	64	189	10.2	62	4.1	251	7.5
Monkton	102	83	216	10.6	67	3.8	283	7.5
Primrose	95	87	264	14.3	67	4.4	331	9.8
Simonside and Rekendyke	121	78	335	15.8	125	7.7	460	12.3
Westoe	47	33	144	6.2	50	2.6	194	4.6
West Park	62	49	149	6.8	56	3.1	205	5.1
Whitburn and Marsden	49	33	99	5.5	30	2.0	129	4.0
Whiteleas	80	51	223	11.3	68	4.3	291	8.1
SOUTH TYNESIDE	1,554	1,128	3,692	10.2	1,194	4.0	4,886	7.4

Source: Office for National Statistics, Tyne & Wear Research and Information

Notes: * Rates are the number of unemployed as a percentage of the estimated labour force (the economically active population), at 2001 Census © Crown Copyright

November 2008								
Ward	FLOWS		CLAIMANT UNEMPLOYMENT					
	onto regr	off regr	Male	%*	Female	%*	Total	%*
Barnes	86	65	178	6.3	61	2.5	239	4.6
Castle	117	78	246	9.1	74	3.3	320	6.5
Copt Hill	97	57	172	6.1	51	2.2	223	4.3
Doxford	82	61	125	4.3	53	2.0	178	3.2
Fulwell	64	45	103	3.5	36	1.4	139	2.6
Hendon	204	168	584	22.3	132	6.2	716	15.1
Hetton	99	72	166	6.5	58	2.7	224	4.8
Houghton	100	63	177	6.6	35	1.5	212	4.3
Millfield	103	96	264	10.0	82	3.7	346	7.1
Pallion	148	85	331	13.3	93	4.3	424	9.2
Redhill	170	115	352	13.7	102	4.8	454	9.6
Ryhope	99	69	197	8.4	59	2.9	256	5.8
St Anne's	111	93	272	12.0	87	4.5	359	8.5
St Chad's	86	49	180	8.1	67	3.4	247	5.9
St Michael's	95	70	190	8.5	56	3.0	246	6.0
St Peter's	81	90	183	6.4	61	2.6	244	4.7
Sandhill	133	82	311	13.0	96	4.8	407	9.3
Shiney Row	106	74	179	5.9	60	2.4	239	4.3
Silksworth	93	78	213	8.3	74	3.1	287	5.8
Southwick	142	105	309	12.8	96	4.6	405	9.0
Washington Central	83	61	154	4.8	61	2.2	215	3.6
Washington East	103	54	173	5.7	54	2.1	227	4.0
Washington North	131	78	270	9.2	99	3.9	369	6.8
Washington South	77	51	139	4.3	52	1.9	191	3.2
Washington West	73	66	149	4.8	45	1.7	194	3.3
SUNDERLAND	2,683	1,925	5,617	8.3	1,744	3.0	7,361	5.9
TYNE & WEAR	9,549	7,358	21,208	8.2	6,543	3.0	27,751	5.8

Source: Office for National Statistics, Tyne & Wear Research and Information

Notes: * Rates are the number of unemployed as a percentage of the estimated labour force (the economically active population), at 2001 Census © Crown Copyright

APPENDIX 2: ANNUAL SUPPLEMENT ON AGE & DURATION

This Annual Supplement contains age-related breakdowns of unemployment.

Appendix Table 2.1 shows that the International Labour Organisation (ILO) (i.e. official) unemployment rates for young people (16-24) are over twice as high (around 15% in Tyne & Wear) as the overall average unemployment rates (6.5% in Tyne & Wear, shown in Table 5). Numerically, there are fewer unemployed young people (aged up to 24) than there are unemployed aged 25-49. Over 40% of all unemployed people are aged up to 24.

Even amongst unemployed claimants, about a third are aged up to 24 (Appendix Table 2.2). Durations of claimant unemployment, however, show over two-thirds are under six months (Appendix Table 2.3).

INTERNATIONAL LABOUR ORGANISATION (ILO) MEASURE OF UNEMPLOYMENT

The ILO definition of unemployment, obtained from the Labour Force Survey (LFS), refers to people “without a job who were available to start work in the two weeks following their LFS interview and had looked for work in the four weeks prior to interview (or were waiting to take up a job they had already obtained)”.

Appendix Table 2.1: National, Regional and County ILO Unemployment By Age Band, Unadjusted: Apr 2007-Mar 2008

	16-24	Rate %	Confidence*	25-49	Rate %	Confidence*	50+	Rate %	Confidence*
Tyne & Wear	14,400	15.3	2.9	15,700	5.1	0.9	5,000	4.5	1.3
North East Region	34,800	16.5	2	32,800	4.6	0.6	11,100	4	0.8
Great Britain	643,500	13.8	0.5	680,000	3.9	0.1	210,600	3.2	0.2

Source: Annual Population Survey, Office for National Statistics.

Notes: Unemployment data are from the Annual Population Survey (APS), covering a year's data.

**Data are presented with an indication of their reliability, in the form of approximate 95% confidence intervals. For example, an LFS estimate and confidence interval of 6.7% +/-0.7%, means the true rate would expect to lie between 6.0% and 7.4%. Only in exceptional circumstances would the true rate be outside the confidence interval. The narrower the confidence interval, the more reliable the estimate.*

APS estimates are rounded to the nearest 100 by ONS. Formally, ONS' LFS estimates were rounded to the nearest 1,000.

CLAIMANT COUNT UNEMPLOYMENT

The claimant count reports numbers qualifying for benefits as a result of unemployment and is subject to the associated administrative system.

Appendix Table 2.2: Unemployment Claimants by Age, % in each age band: April 2008

	Under 20	20-24	25-49	50+
Gateshead	12.9	19.9	51.5	15.6
Newcastle	11.1	21.6	53.0	14.3
North Tyneside	12.1	20.6	51.0	16.3
South Tyneside	12.3	21.2	49.8	16.7
Sunderland	14.2	21.9	50.1	13.8
Tyne & Wear	12.5	21.2	51.1	15.1
North East	13.0	21.9	50.6	14.5
Great Britain	11.6	19.7	53.5	15.2
United Kingdom	11.6	19.8	53.4	15.2

Source: Office for National Statistics

Note: Raw data are rounded to nearest 5 (ONS disclosure control)

Appendix Table 2.3: Unemployment Claimants by Duration, % unemployed by length of time: April 2008

	Under 6 months	6-12 months	1-2 years	Over 2 years
Gateshead	74.5	15.1	8.7	1.7
Newcastle	69.3	17.8	11.5	1.4
North Tyneside	73.4	16.3	9.0	1.2
South Tyneside	69.0	19.4	9.9	1.8
Sunderland	70.9	17.8	10.0	1.2
Tyne & Wear	71.1	17.5	10.0	1.4
North East	70.5	17.1	9.5	2.9
Great Britain	71.0	16.5	9.1	3.5
United Kingdom	70.8	16.5	9.2	3.5

Source: Office for National Statistics

Note: Raw data are rounded to nearest 5 (ONS disclosure control)